



Zhejiang Bodi Export&import Co.,Ltd

Factory Address:
**No. 12, Caozhai Science
and Technology
Incubation Park, Caozhai
Town, Jindong District,
Jinhua, Zhejiang Province**

Production Workshop



Zhejiang Bodi Export&import Co.,Ltd is a professional water bottles and lunch box manufacturer,located in,Jinhua,Zhejiang, China,with more than 30 years of OEM&ODM service experience.



We are one top service provider,from concepts creats,products design,new item development to sample mock up, massive production,quality control and shipment track, Zhejing Bodi is one of the best well performed in Jinhua to worldwide customers.



Angie
M. 137 3575 0749
E. angie@zhejiangbodi.com

betty
M.138 1996 8158 E. betty@zhejiangbodi.com

CONTISI®
ZHEJIANG BODI

BPA Free **LFGB**

国际商贸城55号门H区二楼二街24159-24160-24175店面
Shop 24159-24160-24175,
Second Street, 2nd Floor, H District, Gate 55, International Trade City

个人微信



Storage of raw materials



Mold storage

All our raw materials and molds are managed by dedicated personnel to ensure that the products produced are correct, ensure on-time delivery for customer.



The finished product workshop

Our Factory have more than 3600 square area for production workshop, and 800 square for warehouse. we have more than 1000 different mold. All raw materials are imported from South Korea, all food Grade material.

Our factory have more than 50 workers, and we have our own designer team,we can do the designs as customer want.

Our mainly produce water bottles, lunch box, and stainless steel. we have many many items in stock, we update our products every week.

If you have needs on this part, please do not hesitate to contact us, we will give you reply in 2 hours.



Administrative area



Recreational Areas

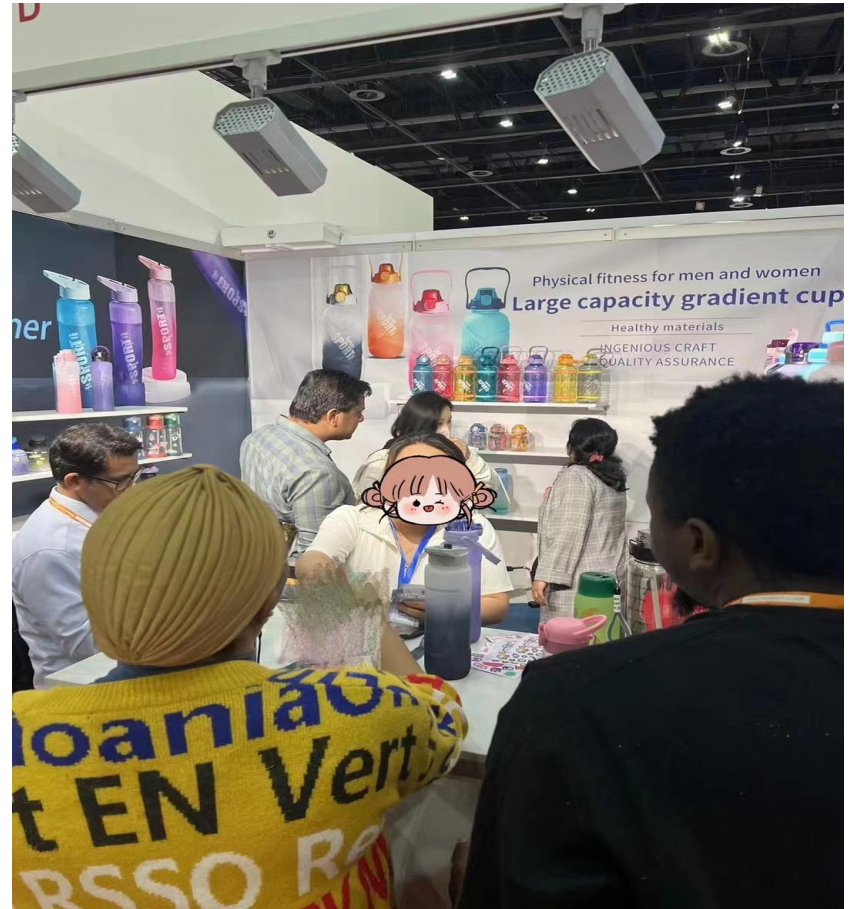
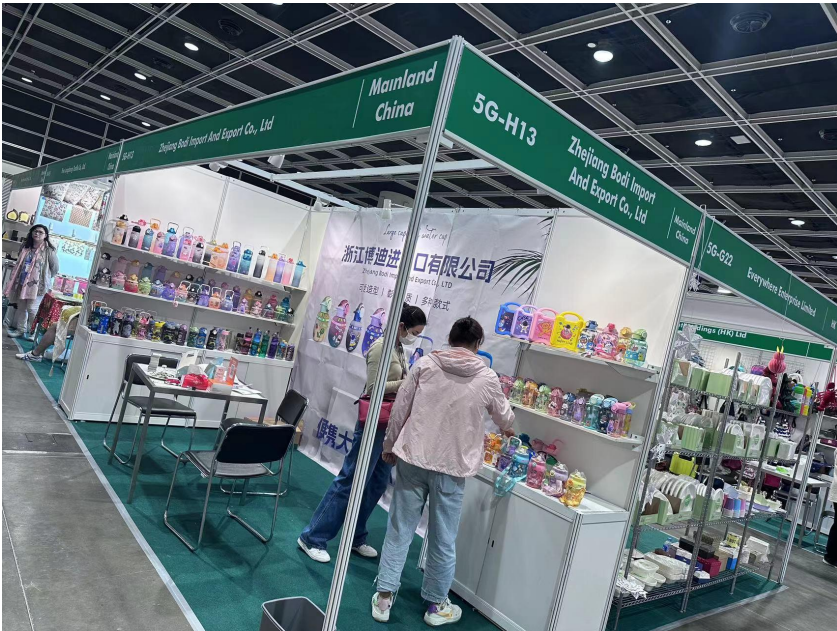


T O D A Y

Exhibition



In 2023, we have participated in exhibitions in Indonesia, Hong Kong, and Dubai, and have many many new clients, Our product customers really like it.



Loading Container



First Empty



Half

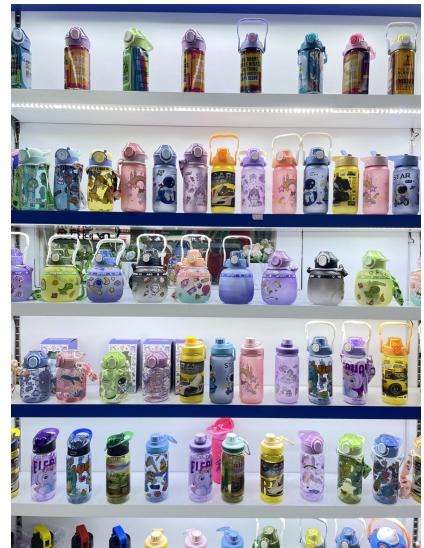


Finish

We can help customers directly load containers in our factory, save customer a lot of unnecessary trouble.

When loading the container, we have a dedicated person responsible for verifying whether the loaded goods are correct and whether they meet the customer's requirements for products and packaging, to ensure the correct loading process.

Showroom





Thanks for Reading

**Hope we can have more
cooperation in futher**

**Our Shop Address:
Shop No.24159, 2nd
Street, 2nd Floor, Gate 55,
Zone 3, Yiwu International
Trade City, Yiwu,Zhejiang.**

**Contacts:
Angie@zhejiangbodi.com**

**Mobil:
+86 137 3575 0794**